



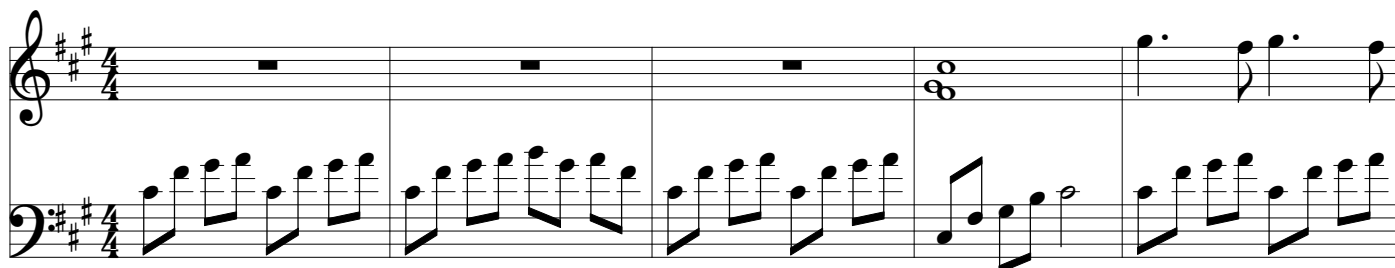
www.xyTune.com

All Rights Reserved

ALMOST A WHISPER

YANNI

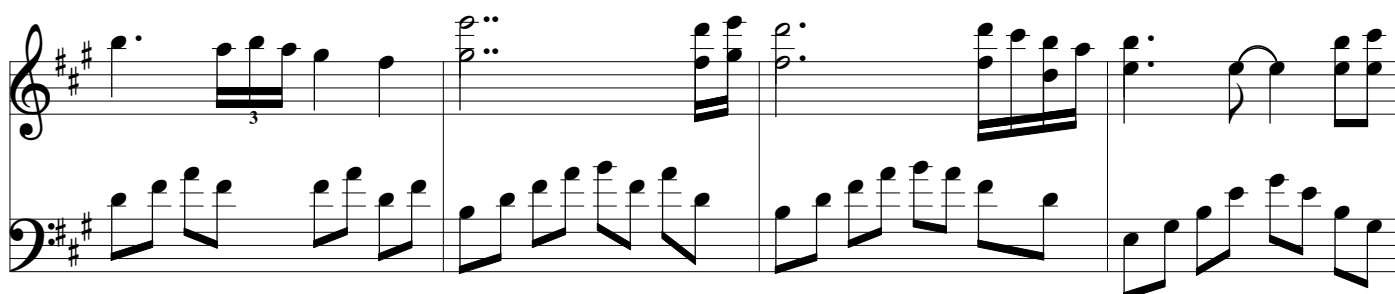
1



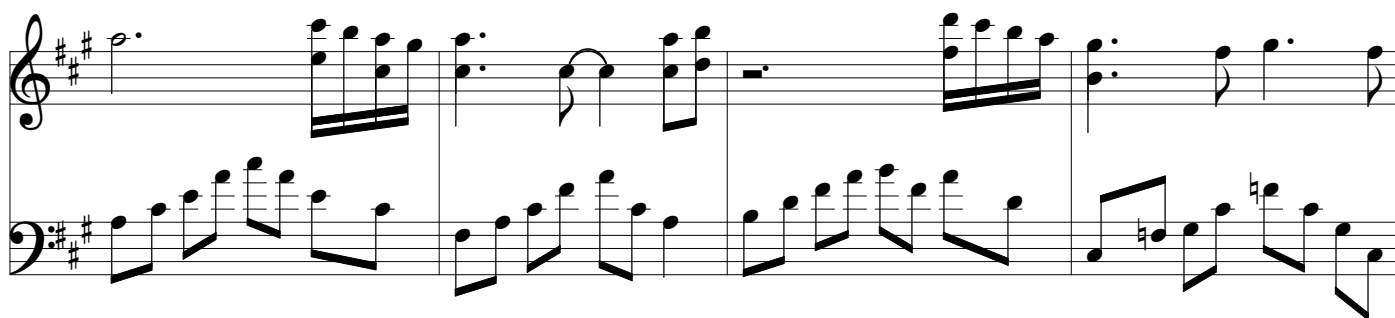
6



10



14



18

A musical score for the song 'The Rose Tree'. It consists of two staves, a treble staff and a bass staff, both in the key of D major (indicated by two sharps: F# and C#). The time signature is 4/4. The melody is written in the treble staff, and the bass line is in the bass staff. The piece begins with a treble clef and a key signature of two sharps. The melody starts on a quarter note D4, followed by a quarter note E4, a quarter note F#4, and a quarter note G4. This is followed by a triplet of eighth notes: F#4, E4, and D4. The melody continues with a quarter note C#4, a quarter note B4, a quarter note A4, and a quarter note G4. The bass line starts with a quarter note D3, followed by a quarter note E3, a quarter note F#3, and a quarter note G3. This is followed by a quarter note A3, a quarter note B3, a quarter note C#4, and a quarter note D4. The piece ends with a final chord of D4, F#4, and A4.

23

A musical score for the song 'The Rose Tree'. It features a treble and bass staff in G major (one sharp). The melody is in the treble staff, and the accompaniment is in the bass staff. The piece is in 4/4 time and consists of 16 measures. The melody includes a triplet of eighth notes in the 14th measure. The bass line provides a steady accompaniment with eighth and sixteenth notes.

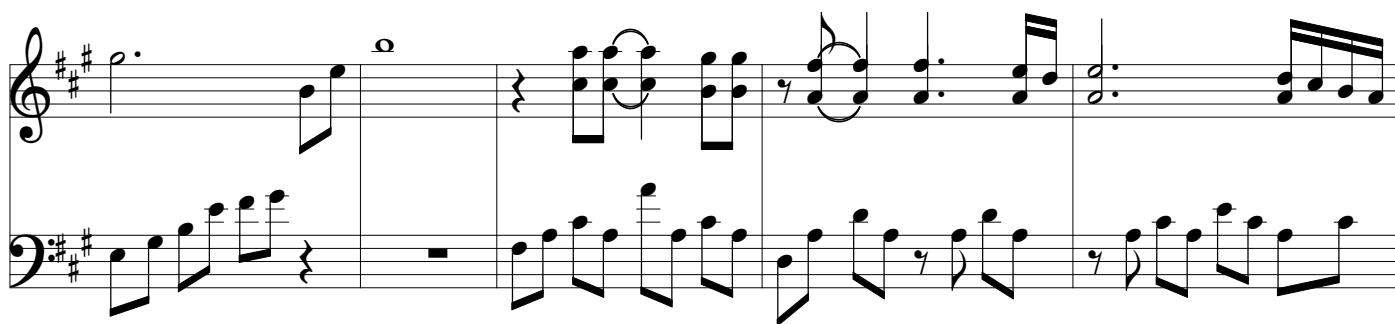
27

A musical score for the song 'The Rose Tree'. It features a treble and bass staff with a key signature of two sharps (F# and C#). The melody is written in the treble staff, and the bass line is in the bass staff. The score is divided into four measures. The first measure shows the beginning of the melody and bass line. The second measure continues the melody and bass line. The third measure shows the melody and bass line. The fourth measure shows the end of the melody and bass line.

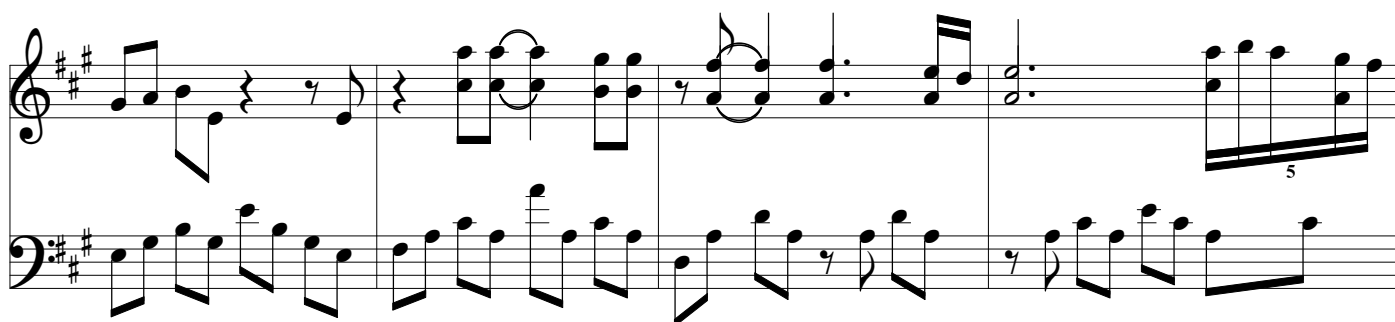
31

A musical score for the song 'The Rose Tree'. The score is written for a piano and voice. The piano part is in the left hand, and the voice part is in the right hand. The key signature is one sharp (F#), and the time signature is 4/4. The score consists of two systems. The first system has four measures, and the second system has four measures. The piano part features a melody with eighth and sixteenth notes, while the voice part has a melody with quarter and eighth notes. The score is written on a grand staff with a treble and bass clef.

35



40



44



48



53



57

61

65

69

73

